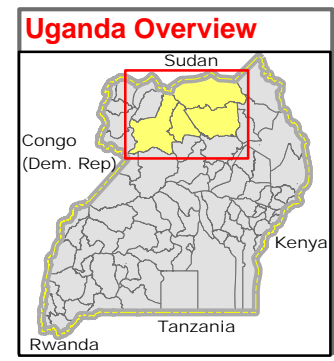
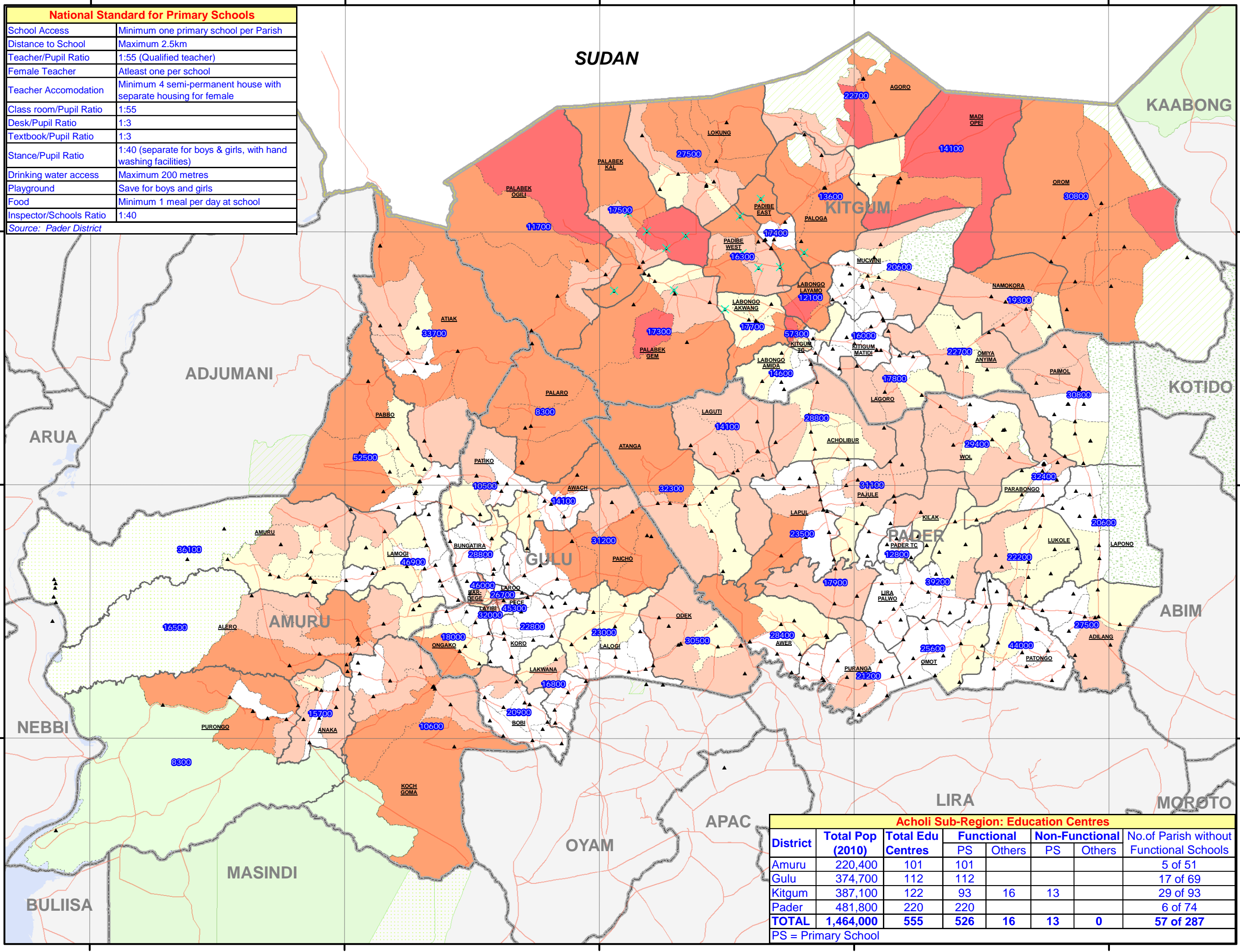


# ACHOLI SUB-REGION: Ratio of Area Covered by Education Facilities in Parishes

National Standard for Primary Schools	
School Access	Minimum one primary school per Parish
Distance to School	Maximum 2.5km
Teacher/Pupil Ratio	1:55 (Qualified teacher)
Female Teacher	Atleast one per school
Teacher Accomodation	Minimum 4 semi-permanent house with separate housing for female
Class room/Pupil Ratio	1:55
Desk/Pupil Ratio	1:3
Textbook/Pupil Ratio	1:3
Stance/Pupil Ratio	1:40 (separate for boys & girls, with hand washing facilities)
Drinking water access	Maximum 200 metres
Playground	Save for boys and girls
Food	Minimum 1 meal per day at school
Inspector/Schools Ratio	1:40

Source: Pader District



**Legend**

- ▲ Education Centers (540 Nos.)
- ✕ Non-functional (15 Nos.)

**%Area covered by Schools**

- Red: No Cover (<1%)
- Orange: 1 - 20%
- Light Orange: 20 - 40%
- Yellow: 40 - 60%
- White: 60 - 100%

**Landuse Type**

- Forest Reserve
- Game Reserve
- National Park
- Rangeland
- Water Body/Lakes

Motorable Road, National Boundary, District Boundary, Sub-County Boundary, Parish Boundary

9999 Sub-County Projected Pop 2010

**Notes:**

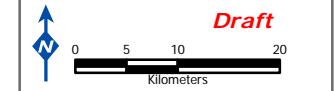
- Ratio of approximate populated area covered by operational Education Facilities within a parish is calculated by using national standards catchment distance (2.5 km aerial). 2.5km radius circle is equivalent to 19,643 sq.km area (using formula  $A = \pi R^2$ ). Approximate area falls inside 2.5km zones are treated as accessible & falls outside are treated as no accessible. Accessibility is based on aerial distance. Assumed that student travel most direct route in plain area.
- Some parishes have no operational education centres within their own parish. However, they still can access facilities from nearby education centres in neighbouring parishes.
- Education coverage presented in this map is based on available locations of operational Education Centres (refer Data Source text below) from the District. It should be noted that coverage ratios change over time. For updated education information, please contact the respective DEO, MoE, & Cluster directly.

**Data Sources:**

- Admin Boundaries - UBOS 2006
- Admin Centres - UBOS 2002/2006
- Landuse - UBOS 2006
- Road Network - FAO
- IDP/Return Sites/Village - Humanitarian Agencies in the field
- Education Centres - DEO & Cluster Leads
- Amuru DEO, Jan '09
- Gulu DEO/Ocha, Mar '09
- Kitgum DEO, Sep '08
- Pader DEO, Dec '08

This map is a work in progress. Please contact the IMU/Ocha as soon as possible with any corrections.

**Map Disclaimer:**  
 The boundaries and names shown and the designations used on this map do not imply official endorsement or acceptance by the United Nations.



Acholi Sub-Region: Education Centres							
District	Total Pop (2010)	Total Edu Centres	Functional		Non-Functional		No. of Parish without Functional Schools
			PS	Others	PS	Others	
Amuru	220,400	101	101				5 of 51
Gulu	374,700	112	112				17 of 69
Kitgum	387,100	122	93	16	13		29 of 93
Pader	481,800	220	220				6 of 74
<b>TOTAL</b>	<b>1,464,000</b>	<b>555</b>	<b>526</b>	<b>16</b>	<b>13</b>	<b>0</b>	<b>57 of 287</b>

PS = Primary School