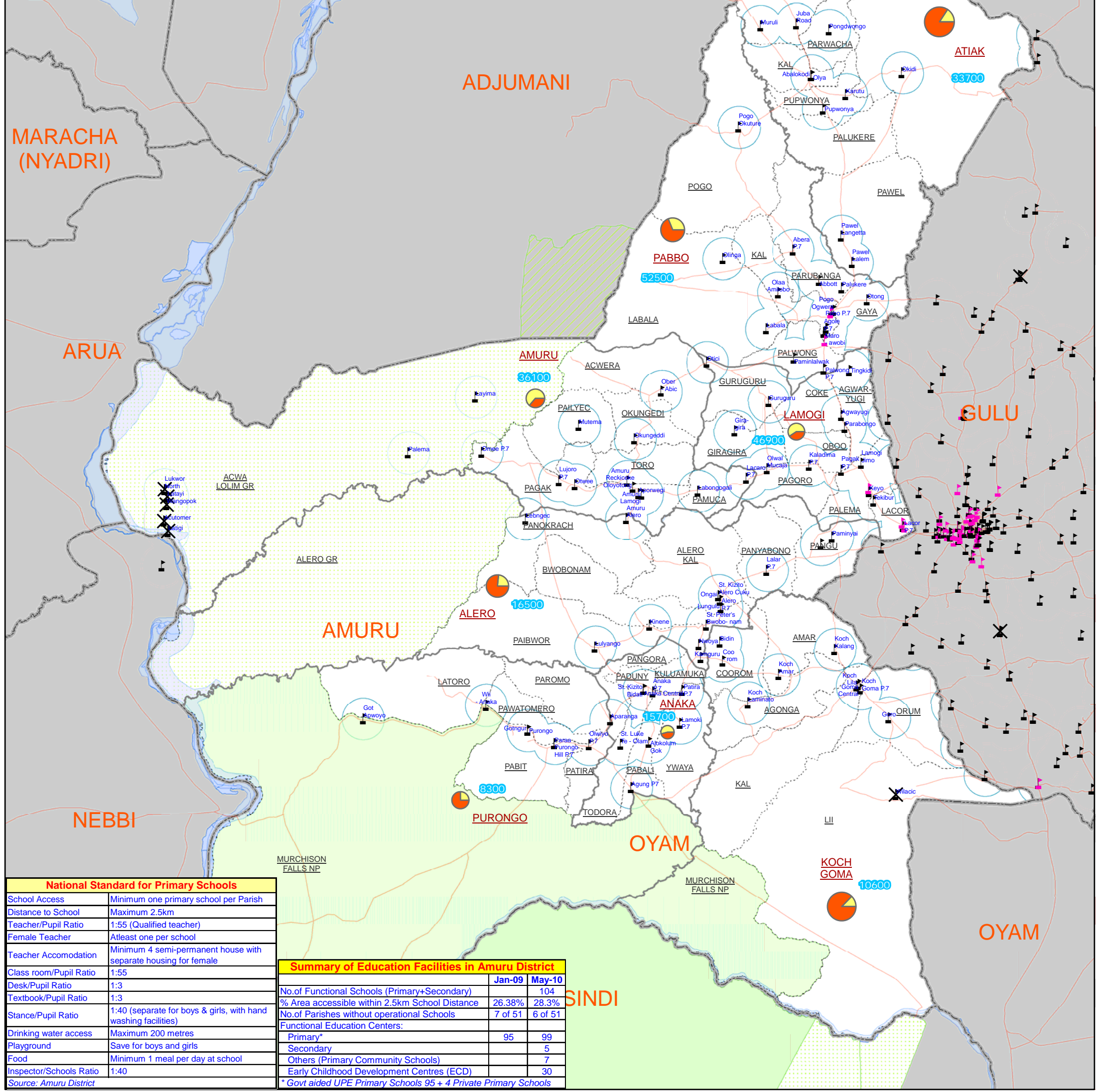


Education Service Accessibility by Sub-County in Amuru District									
	Total	Alero	Amuru	Anaka	Atiak	Koch Goma	Lamogi	Pabbo	Purongo
Total Population (2010 Projection)	220300	16,500	36,100	15,700	33,700	10,600	46,900	52,500	8,300
Total No. of Parish by Sub-county	51	6	6	6	8	6	8	6	5
No. of Operational Schools (Primary+Secondary) by Sub-county	104	14	19	8	12	9	16	17	9
Total Area by Sub-county (Sq.Km.)	8395.75	1338.45	1309.91	236.20	1184.20	1304.38	372.66	757.50	1892.45
Non-populated area - water body/game reserve/nat park (Sq.Km.)	3239.21	668.62	848.04	0.00	1.56	217.96	0.00	0.00	1503.02
Populated area in the Sub-county (Sq.Km.)	5156.54	669.83	461.87	236.20	1182.64	1086.42	372.66	757.50	389.43
Area Access within 2.5km education service buffer (%)	28.28%	23.46%	63.79%	54.06%	15.78%	12.66%	59.30%	31.12%	25.22%
*Total Area Access within 2.5km education service buffer (Sq.Km.)	1458.49	157.14	294.65	127.68	186.61	137.50	220.98	235.72	98.22
Total Area Not Access within 2.5km in the sub-county (Sq.Km.)	3698.05	512.68	167.23	108.52	996.03	948.92	151.67	521.79	291.21
No. of Parish touched by 2.5km education access buffer	50	6	6	6	8	5	8	6	5
No. of Parish without Operational Education Facilities	6 of 51	0 of 6	0 of 6	2 of 6	1 of 8	1 of 6	0 of 8	0 of 6	2 of 5

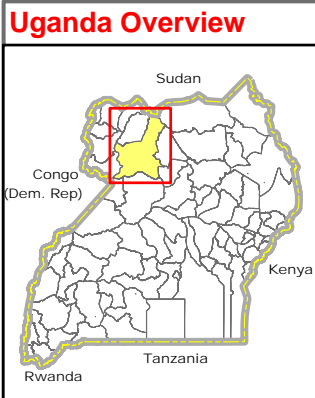
* Accessible area calculated based on Total Populated Area (i.e. excluded other area, such as water body, game reserve, and national park)
 Source: Population (National Population Projection 2010, UBOS), No. of Parish (Based on UBOS Boundary), Other (Calculated using GIS Technique)



National Standard for Primary Schools	
School Access	Minimum one primary school per Parish
Distance to School	Maximum 2.5km
Teacher/Pupil Ratio	1:55 (Qualified teacher)
Female Teacher	Atleast one per school
Teacher Accomodation	Minimum 4 semi-permanent house with separate housing for female
Class room/Pupil Ratio	1:55
Desk/Pupil Ratio	1:3
Textbook/Pupil Ratio	1:3
Stance/Pupil Ratio	1:40 (separate for boys & girls, with hand washing facilities)
Drinking water access	Maximum 200 metres
Playground	Save for boys and girls
Food	Minimum 1 meal per day at school
Inspector/Schools Ratio	1:40

Summary of Education Facilities in Amuru District		
	Jan-09	May-10
No. of Functional Schools (Primary+Secondary)		104
% Area accessible within 2.5km School Distance	26.38%	28.3%
No. of Parishes without operational Schools	7 of 51	6 of 51
Functional Education Centers:		
Primary*	95	99
Secondary		5
Others (Primary Community Schools)		7
Early Childhood Development Centres (ECD)		30

* Govt aided UPE Primary Schools 95 + 4 Private Primary Schools



Legend

- Non-Functional (Red X)
- Unknown (Black X)
- Primary (Black triangle)
- Secondary (Pink triangle)
- Other Centers (Yellow triangle)
- 2.5km Access buffer (~1 hr walk to any School) (Blue circle)
- Motorable Road (Red line)
- National Boundary (Yellow dashed line)
- District Boundary (Grey dashed line)
- Sub-County Boundary (Red dashed line)
- Parish Boundary (Black dashed line)
- Pie (Ratio of Approx Area)
 - Access (Red)
 - No Access (Blue)
- Landuse Type
 - Forest Reserve (Green hatched)
 - Game Reserve (Yellow hatched)
 - National Park (Green solid)
 - Rangeland (Green dotted)
 - Lakes/Water Body (Blue solid)
 - Projected Population 2010 (999 icon)

Notes:

- Total number of parish touched by 2.5 km access buffers, and approximate ratio of access area within sub-County are derived by using GIS technique. 2.5 km radius circle is equivalent to 19.643 sq.km area (using formula $A = \pi \cdot R^2$).
- Approximate area falls inside 2.5km zones are treated as accessible & falls outside are treated as not accessible.
- Accessibility is based on aerial distance. Assumed that students travel most direct route in plain area.
- Pie size is graduated by total populated area (excluded water body, game reserve, range land, nat park, etc) of sub-County.
- Accessibility presented in this map is based on available location of Schools from the District. Therefore, accessibility level change over time. For updated school information, please contact directly to DEO or MoE.

Data Sources:

- Admin Boundaries - UBOS 2006
- Road Network - FAO, District, Ocha
- Landuse - UBOS 2006
- Education Facility and thematic - DEO-Pader, Unicef/MoE (Apr/May 2010) (Re-verified/commented by DEO/Unicef, 4 June 2010)

Map Disclaimer:

The boundaries and names shown and the designations used on this map do not imply official endorsement or acceptance by the United Nations.

Map Prepare Date: 02 June 2010 (IMU/UNOCHA)
Map Update: 04 June 2010

File: UG-Education-16_A3_02June2010_Amuru District Education Service Accessibility - May 2010 (nk)