

Malnutrition and related mortality among under five children in Nusa Tenggara Timur (NTT)

World Food Programme

Donor/NGO informal discussion

June 27, 2008

Outline

1. Demographic data
 2. Growth monitoring
 3. Malnutrition
 4. Malnutrition related deaths
 5. Food security information
 6. Possible causes
-

Demographic data of NTT

- ❑ Total population: 4.35 million
- ❑ Estimated under five children (15%): 652,000
- ❑ Districts: 16 (until February 2008)
20 (since March 2008)

(4 new districts: Sumba Barat Daya, Sumba Tengah, Manggarai Timur and Negakeo)

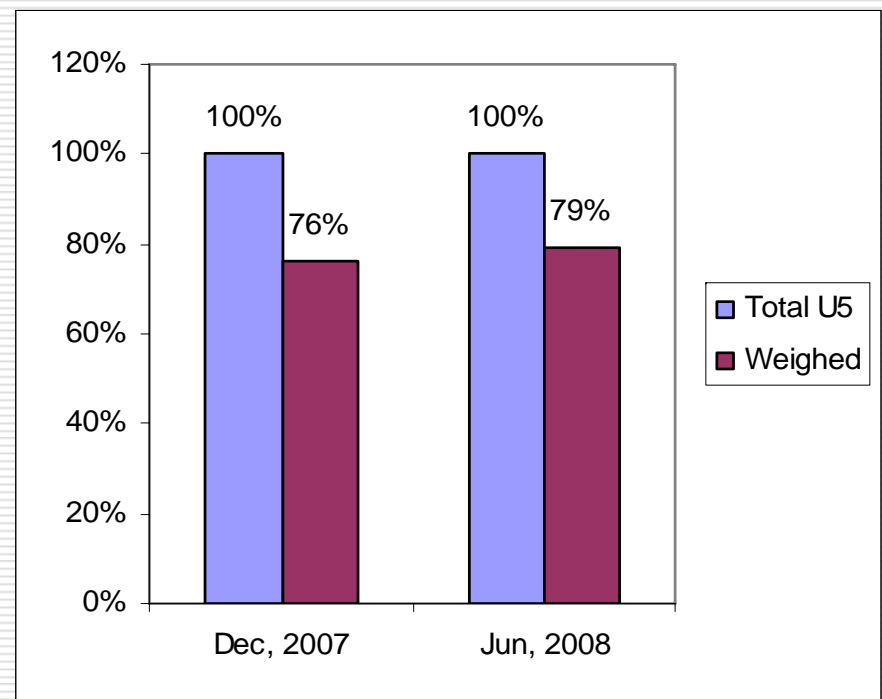
Source: BPS Statistics, 2006

Growth Monitoring

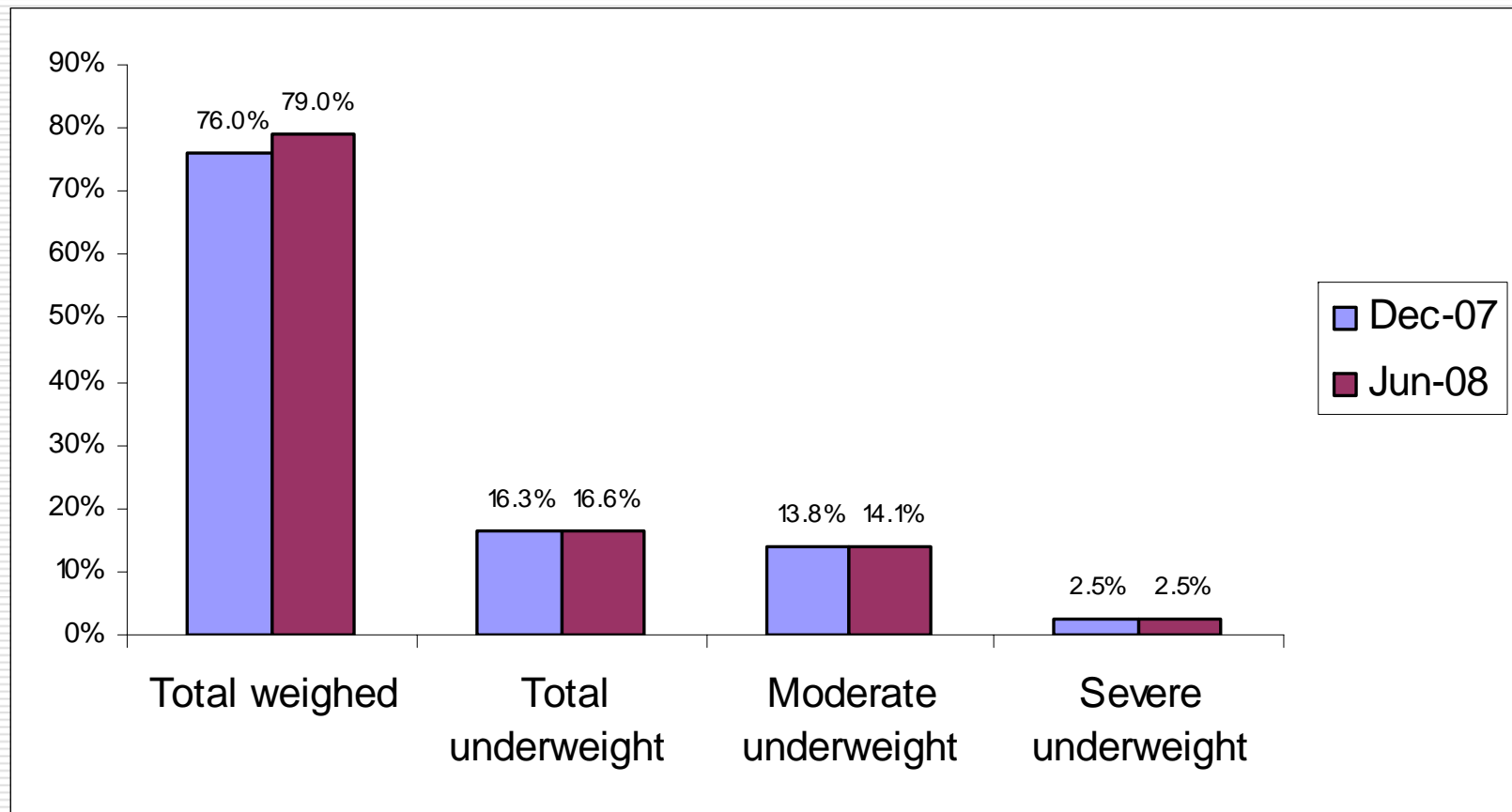
Growth monitoring undertaken for 76% of under fives in Dec 07, 79% in Jun 08.

More than one fifth of under fives are not regularly weighed.

Source: NTT Provincial Health Office (Dinkes, Dec 2007 and Jun 2008)



Malnutrition (underweight, weight-for-age)

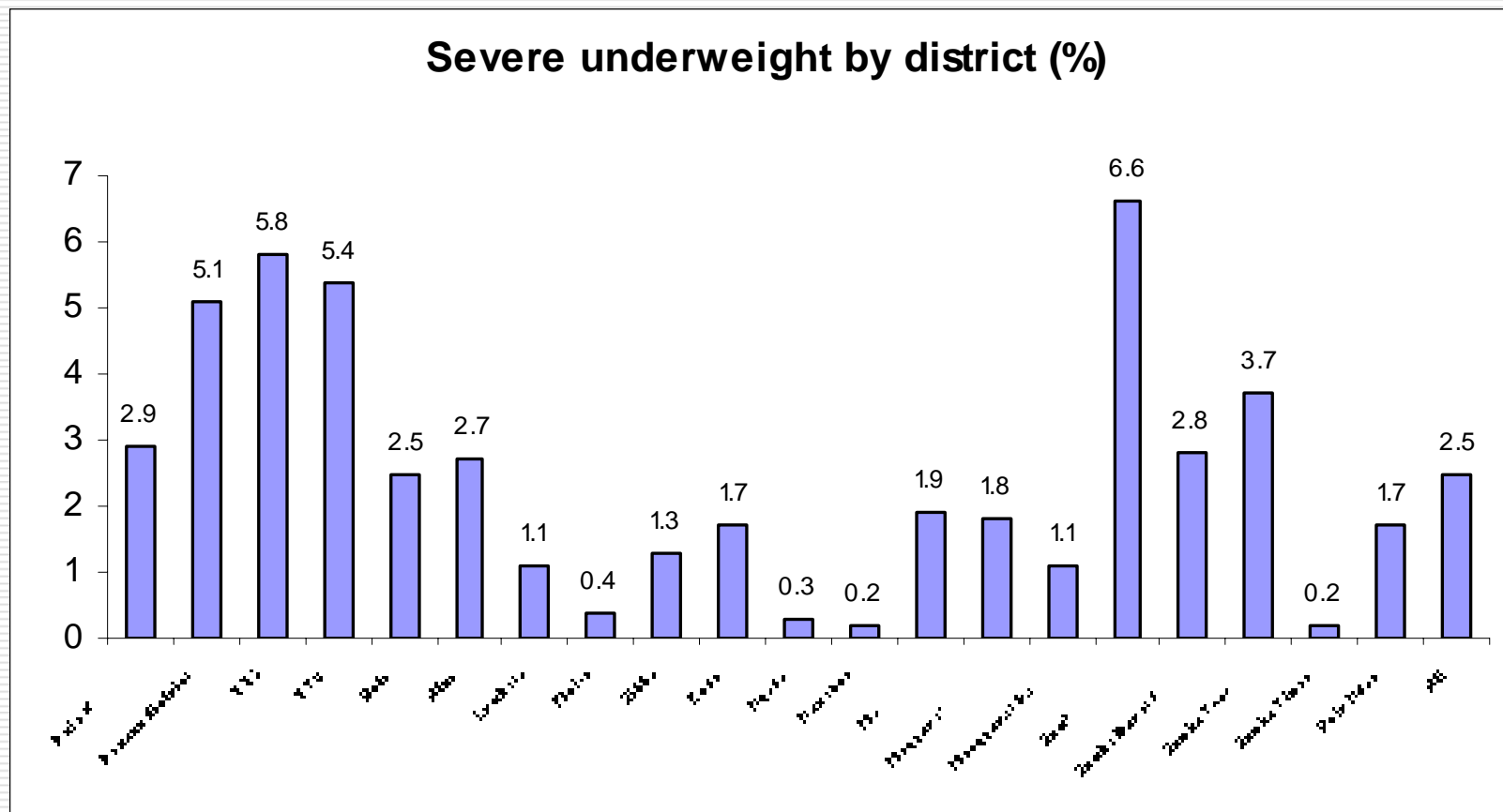


Malnutrition (continued)

In June 2008:

- ❑ Total underweight rate of NTT is ranked at the POOR level (WHO criteria, 10-19%)
 - ❑ Sikka and Manggaral: at the serious level (20-29%)
 - ❑ TTS and TTU: at the critical level ($\geq 30\%$)
 - ❑ Province as whole: no significant changes in underweight rates (total, moderate and severe) in Jun 2008 compared with Dec 2007
 - ❑ By district, malnutrition increased in Alor, and 3 **split districts (Manggarai, Manggarai Barat, Sumba Barat)**
-

Severe malnutrition by district (June 2008)



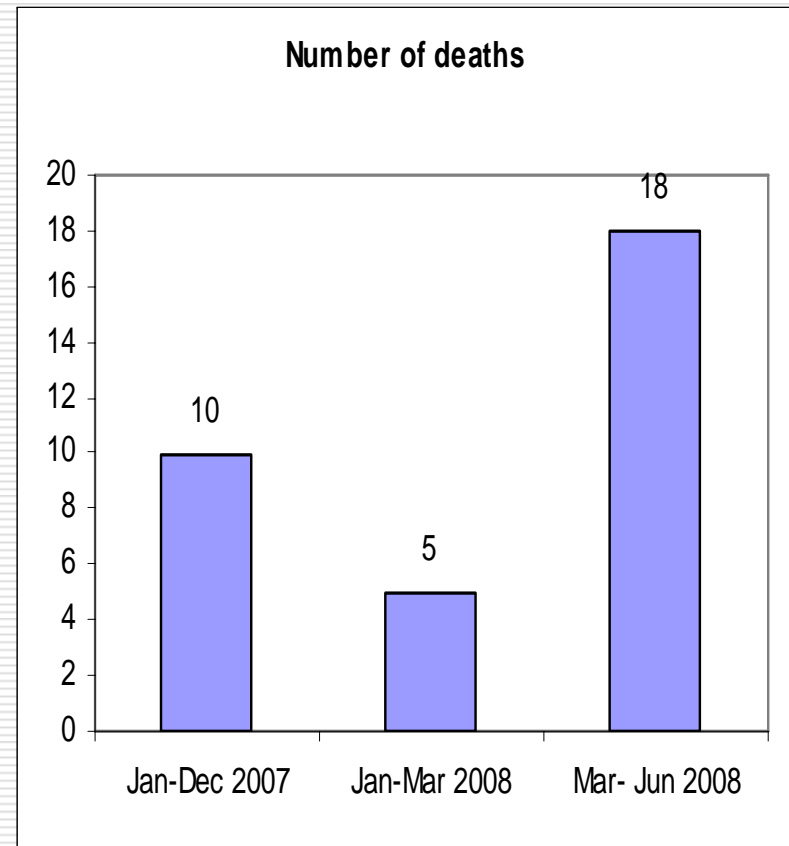
Severe malnutrition (continued)

- ❑ Location: More prevalent in Sumba Barat, TTS, TTU and Kupang district
 - ❑ Trend: Compared with 2007, significantly increased in TTU, Alor and Sumba Barat (**a split district**)
-

Malnutrition related mortality

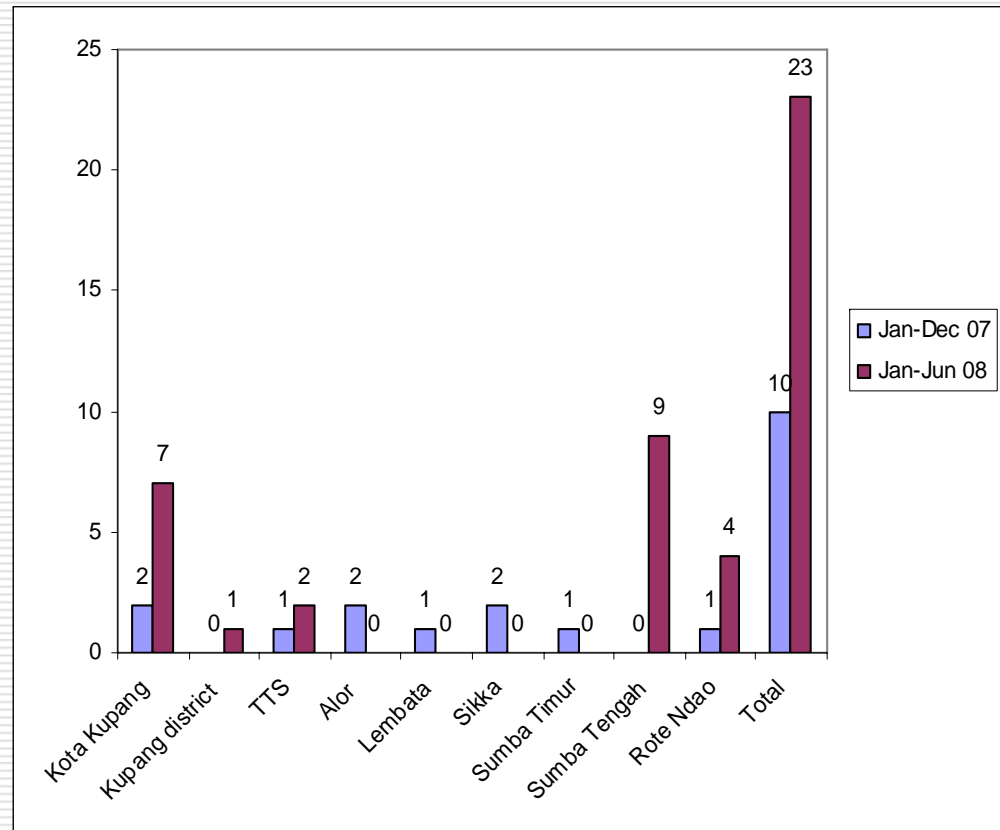
Number of deaths remarkably increased during Jan-Jun 2008, especially during Mar-Jun period

Deaths not increased during the lean season (*i.e. Dec - Feb*), but during maize harvest and at beginning of cassava harvest



Deaths by district

Number of deaths sharply increased in Kota Kupang, Sumba Tengah (split district) and Rote Ndao during Jan-Jun 2008



Food security information

During Jan-Jun 2008:

- ❑ No evidence of crop failures nor food shortage reported
- ❑ Favorable weather and crop production predicted
- ❑ No major natural disasters occurred. Only some localised floods reported

Source: Provincial Food Security Council, June 2008

Possible causes

- ❑ Increased malnutrition related deaths in NTT during Jan-Mar 2008 are unlikely caused by food shortages (*facts: unchanged total malnutrition rates, did not happen during lean season, no information on food shortages, favorable weather and crop prediction, no major disasters*).
 - ❑ Other factors seem to be the immediate and underlying causes which need to be assessed (*infections, poor treatment of severe malnutrition and infections, inadequate child health care and feeding practices, poor sanitation*).
 - ❑ Particular attention should be paid to split districts (*Sumba Barat, Sumba Tengah, Manggarai, Manggarai Barat*) as well as Kota Kupang.
-

Thank You
Questions?
