

**OCHA COUNTRY PROFILE:  
COLOMBIA**

**BASIC FACTS:**

Total Population (2008 projected)	44.450.260
Annual Growth Rate (2007 estimated)	1.43%
Global fertility rate (2005 survey)	2.4. <sup>1</sup>
Unsatisfied Needs 2005	27.6% <sup>2</sup>
Basic Public Debt	38% of GDP <sup>3</sup>
Infant mortality rate 2005	19 per 1,000 live births <sup>4</sup>
Homicides in 2008	8.030 <sup>5</sup>
Total IDPs Official SIPOD Government registry	2.577.402 total IDPs through June 30, 2008
IDPs in 2007 SIPOD	269.107 IDPs
IDPs in 2008 SIPOD	83.994 IDPs through June 30, 2008 <sup>6</sup>
Total IDPs NGO estimates	4.185.477 (305.000 IDPs in 2007) <sup>7</sup>

**HUMANITARIAN CONTEXT:**

Colombia has been immersed in an internal armed conflict for the past 50 years, involving State Military Forces and illegal armed actors. During the last years Colombia has seen a steady improvement of the overall human rights and crime-related indicators as result of the Government's action with the support of the international community; however serious breaches to IHL and HR violations continue to be reported throughout the country. Through 2007, governmental sources recorded 947 armed confrontations in more of 30% of Colombian Territory and 884 landmine victims<sup>8</sup>. In 2008, official figures register 157 armed confrontations through May and 476 landmine victims through June. Estimates between 7,000 and 14.000 children forcibly recruited by non-State armed actors have been made by the Coalition to stop the use of Child Soldiers. Aside from the political and humanitarian consequences of the Colombian armed conflict, the crossing of boundaries into neighbouring countries have caused, causing diplomatic incidents by illegal armed groups<sup>9</sup>. At the same time, the country has faced serious natural disasters. In 2007, Colombia experienced two of the harshest rainy seasons of the past 20 years, leaving more than 1.500.000 people seriously affected (December 2007). In 2008, through July 28, official figures register 518,638 people affected so far<sup>10</sup>.

Through December 2007, the Ombudsman's Office emitted 179 risk alerts in 22 departments. Regarding forced displacement, the official IDPs registry reports 220.439 people displaced during 2007.

**POLITICAL CONTEXT:**

During 2007, Venezuelan President Hugo Chavez offered his mediation offices to broker an agreement with FARC that would lead to the release of high-profile hostages for FARC prisoners. Diplomatic incidents and a failed rescue operation of three of the hostages in December caused this mediation to be suddenly ended by the Government of Colombia. FARC decided the unilateral release of six hostages (5 ex-members of the Congress and the campaign manager for former senator and presidential candidate Ingrid Betancourt).

Bi-national relations between Colombia and Venezuela (as well as also Ecuador and Nicaragua) reached its most critical point in recent years, particularly in the March of 2008 when a military operation in the border with Ecuador ended with the life of one of the principal FARC leaders, 'Raúl Reyes'. As Presidents Correa and Chavez demanded explicit sanctions for Colombia's incursion in Ecuadorian territory, the diplomatic

<sup>1</sup> Census DANE 2007 and growth rate, Survey on Fertility Rate – Profamilia ENDS 2006.

<sup>2</sup> Census DANE 2006.

<sup>3</sup> Treasury, Public Debt Profile, Cut off date: February 29, 2008.

<sup>4</sup> Profamilia ENDS survey 2005

<sup>5</sup> HHRR and IHL Observatory, Vicepresidency. Homicides through June 2008

<sup>6</sup> SIPOD - IDP registry, 1995- Feb 29, 2008 total. Cut off date February 29, 2008.

<sup>7</sup> NGO CODHES estimates, 1985-2007 Total.

<sup>8</sup> Vicepresidency, Mine Observatory. Total mine victims 1990 – February 2008.

<sup>9</sup> The Ecuadorian Government made at least 5 complaints to the Colombian Government during 2006, regarding military incursions into their territory. On 24 August, 3 civilians at the Ecuadorian community of Puerto Nuevo were injured due to the explosion of a grenade launched during a confrontation between the Colombian army and FARC. On February 2006, two European citizens were kidnapped by Colombian non-State actors in the Panamanian community of Jaqué, where different organization have denounced a constant intrusion by members of paramilitary and guerrilla groups.

<sup>10</sup> General Directorate for Disasters' Assistance and Prevention (DPAD), July 28.

incident was solved during a Rio Group Summit on March 17 after President Uribe reiterated official apologies and a verification mission to the area by OAS was agreed.

Coupled with the death of Raúl Reyes, a month later the government announced the death of FARC's top commander, alias Manuel Marulanda –otherwise known as Tirofijo-. He was succeeded by alias Alfonso Cano. During the course of 2008 several top-commanders of FARC's secretariat were killed in military operations. Subsequently, the Colombian Armed Forces gained capacity to infiltrate the organisation and in July 2, the GoC announced the successful rescue operation that led former presidential candidate Ingrid Betancourt, 3 U.S. contractors and 11 soldiers/policemen –several of them held captive for almost 10 years- to their freedom. The operation was later reproached given the use of an ICRC emblem.

On the other hand, President Alvaro Uribe's government looked for a rapprochement with the leaders of ELN through a round of peace dialogues starting on April. During the round, proposals of "experimental and temporary ceasefire", political convicts and hostage's liberation, among other issues were made by the illegal armed group while the National Government stood firm on the need of a concentration area of ELN troops as well as of a demining process. However, dialogues were suspended as an agreement around the terms of ceasefire and the concentrations of ELN troops was not met. In August, Colombia's vice-president declared dialogues with ELN were fruitless and pointed-out this organisation continues to massacre civilians and plant landmines. Thus –he emphasised- peace efforts with ELN are completely halted.

In 2003 the government completed the demobilisation process of paramilitary forces (approximately 33 thousand combatants). However, illegal economies provided incentives for the rearming of allegedly new self-defense groups in several regions. Up to this date, over 50 congressmen and politicians tied to paramilitary commanders have been charged of colluding with crimes; the reintegration phase had some setbacks in the beginning of its implementation; and the reparation of victims still faces many pitfalls and difficulties derived from the context of ongoing violence. However, steps forward have been taken in both directions. The Presidential High Council for Reintegration conducts important efforts to design a comprehensive reintegration strategy, while the National Reparation and Reconciliation Commission is developing a public policy to address victims through administrative and judicial reparation measures and processes.

#### **MAIN HUMANITARIAN ISSUES:**

The main factors that are contributing to the trend of deepening vulnerability of the population include:

- Appearance of new illegal armed bands (69)<sup>11</sup>.
- Shifting of the conflict to border regions, some areas have improved security situations while others have a worsened situation.
- A notable trend towards increasing use of Antipersonnel Mines in the conflict by illegal armed groups, resulting in the maiming and deaths of hundreds of civilians annually.
- A complex political panorama, combining reported clashes among insurgent groups (FARC-ELN) and a lack of clarity in the reconciliation process in the midst of the conflict, which has led to heightened tensions and sporadic assassinations.
- High violence figures related to drug production and traffic and to the predominance of illegal economies in some regions of the country.

The broad humanitarian picture can be depicted as follows:

Protection of IDPs: With more than 200,000 newly displaced IDPs in 947 municipalities of 31 departments according to official registries in 2007 and even higher estimates on the part of NGOs, Colombia has one of the most complex internal displacement situations in the world, requiring increased protection measures for IDP population including the full application of the Colombian legal framework for IDPs. According to official data, internal displacement has decreased by 30% between 2006 and 2007. However, the number of IDPs declarations in 2007 increased by 3%<sup>12</sup>.

Landmines and ERW: With 6.724 total landmines/ERW victims (476 during 2008), Colombia is the country with the highest rate of new victims of these artefacts worldwide. At least 34% of the total amount of victims was civilians, and no less than 80% of Colombian territory has been declared mine affected. Even though official figures show a 22% decrease in the number of landmine victims between 2006 and 2007<sup>13</sup>, the total number of affected municipalities has increased as well as and the number of victims in the departments of Quindío, Putumayo, Valle del Cauca y Guaviare (up to a 200%). According to the same source, the

<sup>11</sup> Nacional Ombudsman's Office

<sup>12</sup> SUR IDPs registry. Declarations 2006 – 2007. Cut off date December 31, 2007

<sup>13</sup> Action Against Mines Presidential Program, Vicepresidency.

department of Antioquia, concentrating 16% of the casualties reported during 2007, is considered the most affected, followed by Arauca, Tolima, Nariño and Caquetá.

Child soldiers: Although there are no official data regarding this issue, the Coalition to stop the use of Child Soldiers revealed that between 8.000 and 13.000 boys and girls are actually recruited by non-state armed actors in Colombia.

Indigenous and Afro Colombian communities: According to Official IDP Registry, during 2007 more than 5.000 indigenous people were forced to displace in the departments of Antioquia, Caquetá, Cauca, Cesar, Nariño and Tolima, among others. As for Afro Colombians, official figures registered the displacement of nearly 32.000 members of these communities, mainly in the Pacific and Caribbean regions. Many Indigenous and Afro Colombian ancestral territories throughout the country suffer blockades due to the presence of landmines and to sustained armed confrontations between armed actors, particularly in the departments of Cauca, Nariño and the Pacific coast. These situations, together with the structural problems of poverty, malnutrition and illiteracy have placed indigenous and Afro Colombian communities in high levels of risk of human rights and IHL violations.

Humanitarian access: At least 57 communities (more than 30,000 persons) reported confinement for periods above 10 days, due to the presence and/or actions developed by armed actors. These communities faced shortages of food, prohibitions for the access of medical and humanitarian missions, mobility restrictions and even homicides.

Natural Disasters: 187 municipalities in 28 departments have been affected by heavy rains and floods during the two rainy seasons, leaving over 1.500.000 people affected. The most affected departments thus far have been Chocó, Bolívar, Sucre, Córdoba and Magdalena. In La Mojana region, with more than 100,000 people affected, was declared by President Alvaro Uribe a regional disaster situation. Consequently, the Central Emergency Respond Fund (CERF) approved USD\$6.3 million to complement the emergency humanitarian assistance provided by the National Government throughout six projects in the areas of food, shelter and WatSan in La Mojana region and Córdoba department.

518,638 people have been affected in 2008 by floods and landslides related to the first rainy season, particularly in Bolívar, Nariño, Cauca and Chocó.

#### **EARLY WARNING CONSIDERATIONS:**

- The steady deterioration of the humanitarian situation is likely to continue due to competition over coca production, reported fighting between rebel groups; and continued human displacement in areas of landmines, forcible recruitment of children and human rights violations.
- Strong rains menace the northern part of the country and the Pacific coast while the La Niña phenomenon could increase fire propensity and affect water supply resources.

#### **FUNDING AND MAJOR DONORS:**

As of 2007, the United States Government continues to be the major donor for humanitarian issues, through the Displacement and Vulnerable groups programme. The US Government is actually providing nearly 40% of the total funding for humanitarian issues. With 20% of the funding, the European Union stands also as one of the most important donors, through the regional Peace Laboratories as well as through the Humanitarian Aid Department (formerly known as ECHO). Other major donors are the Governments of Sweden, Switzerland, Spain, Holland, Norway and Finland. Colombia received USD\$6.3 million from the Central Emergency Relief Fund to support the implementation of three projects in La Mojana region, severely affected by floods during 2007.

#### **OCHA PRESENCE:**

OCHA has been present in Colombia since 2001. The operation in OCHA Colombia includes 34 members of the national staff, (1 UNV and 4 Consultants) and 7 international officers (1 UNV), working from the central Bogotá office, 3 Field Offices, and 4 Satellite Offices.

#### **SITUATION ANALYSIS AND NEXT STEPS:**

Given the tendencies of the above mentioned issues, it is possible to foresee a continuity of the degradation of the humanitarian situation, with the increase of aspects such as use of landmines and ERW, the confinement of rural communities and forced displacement (including intra-urban migrations). Humanitarian and political sectors present in Colombia will also face the impact of the appearance and strengthening of new armed groups, which have so far represented a serious threat to security and wellbeing of civilians.

**July 2008**

In terms of natural disasters, the impact of the Lal Niña phenomena will be seen all throughout the first semester of the year, and will possibly mean the worsening of the already critical situation and the shortage of food and water in different areas of the country, with the evident repercussions over health and food security. The situation of the Galeras Volcano in Nariño will also mean an important challenge in terms of coordination and prevention, and will demand full attention of national structures and international cooperation, both at an imminent eruption or during the preparedness period.

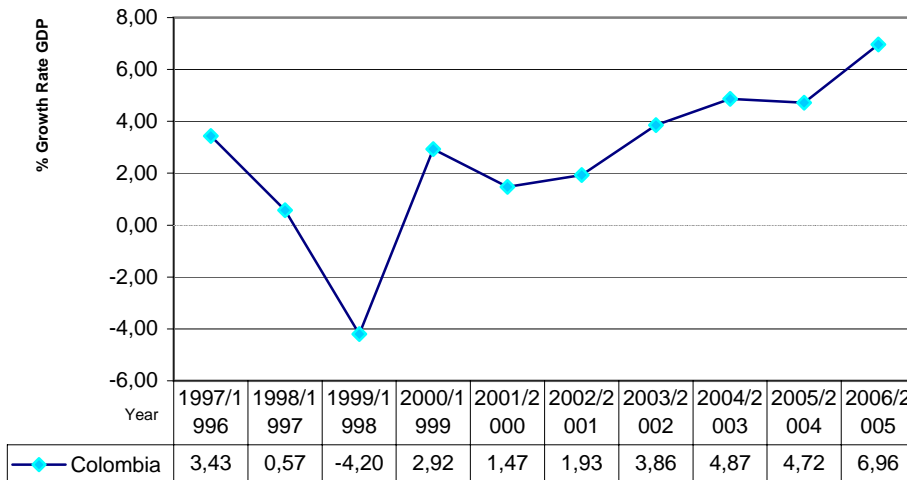
The main focus of UN Colombia since the Interagency Standing Committee Mission to the country in September 2007 has been in implementing the recommendations of the mission. In this regard OCHA Colombia has advanced in its role as technical secretariat of the national IASC, three thematic groups (Protection, Assistance and Early Recovery) and seven coordination mechanisms at regional level. In April 2006, the IASC-CT finalized a common Country Need Assessment. The next steps will include a coordinated implementation of three interventions in the most vulnerable areas (deterioration of the humanitarian situation and the impact of floods), i.e. Nariño department, Litoral Pacífico and La Mojana region. UNDAC is finalizing a contingency plan for natural disasters for Colombia. OCHA Colombia has developed an integrated information system with a map server for use by the UNS.

<b>Compound Indicators</b>		<b>Source</b>
Unsatisfied Basic Needs (UBN)	27,6%	DANE- Census 05
Unsatisfied Basic Needs (UBN) Municipal Seats	19,5%	DANE- Census 05
Unsatisfied Basic Needs (UBN) Rest	53,3%	DANE- Census 05
Under the Poverty Line	49,7%	DNP - 05
Population in Misery	15,7%	DNP - 05
Quality of Life Index	78,8%	DNP - Misión Social 04, base prov censo DANE 93 y FH
Human Development Index (HDI)	0,85	DNP - DDS - GCV 04
Gender Power Index (GPI)	0,51	DNP - DDS - GCV 01
<b>Economic Indicators</b>		
GDP Growth	7,0%	DANE 06
Unemployment Rate	11,1%	DANE 07
Economically Active Population	44,6%	DANE 07
Occupation Rate	51,2%	DANE 07
Overall Rate of Participation	57,7%	DANE 07
GINI Coefficient	0,55	DNP - DDS - GCV 01
<b>Education Indicators</b>		
Coverage rate - Primary	88,0%	MINEDUC 05
Unattendance Rate. (Between 3 and 17 years)	21,8%	DANE- Census 05
Illiteracy Rate (Over 15)	9,6%	DANE- Census 05
<b>Food Security Indicators</b>		
Chronic Malnutrition Rate	9,0%	Profamilia ENDS 05
<b>Health Indicators</b>		
Contributive Regimen in SISBEN 1 and 2 Coverage Rate	12,2%	MPS 06
Deficit Plenary Subsidies Coverage	29,7%	MPS 06
Deficit Partial Subsidies Coverage	42,4%	MPS 06
Infant Mortality Rate per 1000	19,0	Profamilia ENDS 05
Infant Mortality Rate per 1000 (over 5)	22,0	Profamilia ENDS 05
Global Fertility Rate	2,4	Profamilia ENDS 05
<b>Housing and Infrastructure Indicators</b>		
% Coverage Aqueduct	83,4%	DANE- Census 05
% Coverage Sewage Services	73,1%	DANE- Census 05
% Coverage Electricity	93,6%	DANE- Census 05
% Homes in SISBEN with Electricity	91,6%	SISBEN 07, DNP-CGR-DESSOC
% Homes in SISBEN with Sewage	49,1%	SISBEN 07, DNP-CGR-DESSOC
% Homes in SISBEN with Aqueduct	75,0%	SISBEN 07, DNP-CGR-DESSOC
<b>Social Indicators</b>		
Homicide Rate( per 100.000)	39,02	DIJIN 07
Kidnapping Rate (per 100.000)	1,17	DIJIN 07

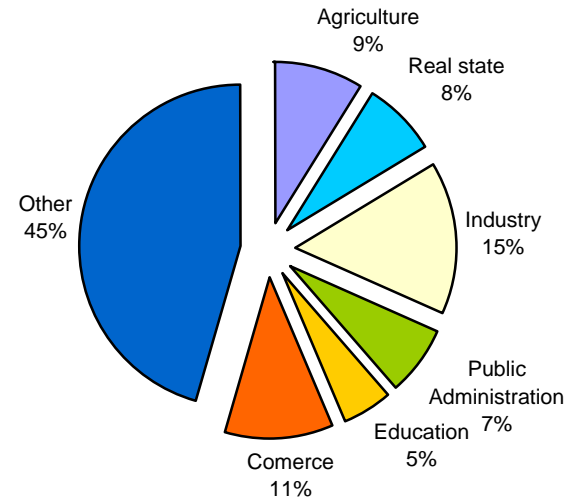
# General Information

Colombia

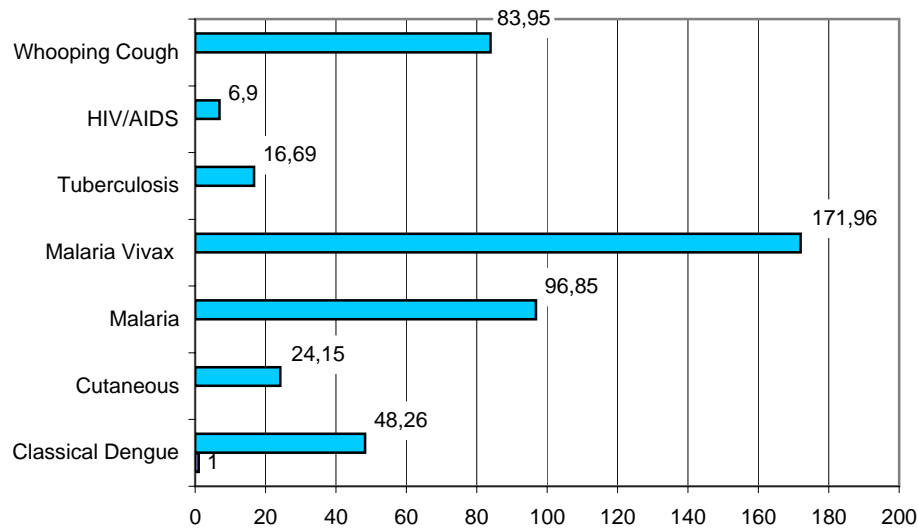
### GDP Growth Rate %



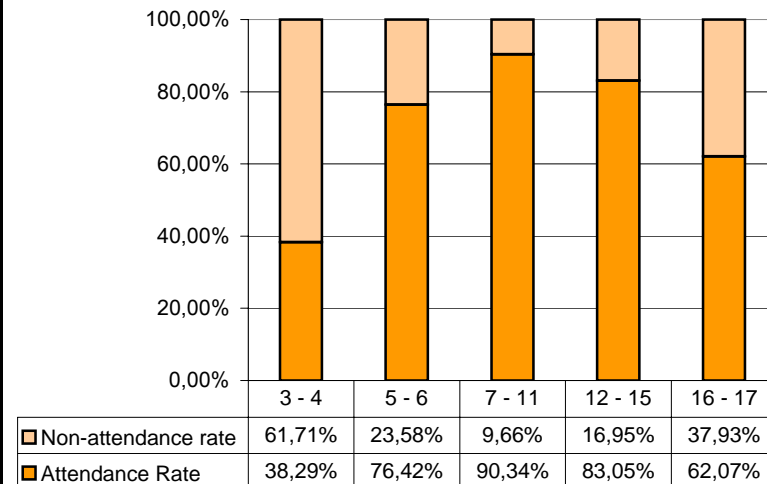
### National GDP Distribution



### Disease Report Rates in 2005, per 100,000



### School Attendance Rate



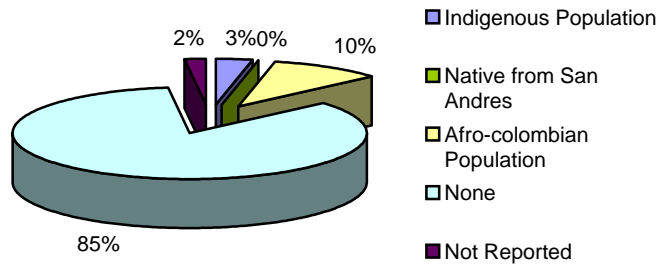
# Demographic Information

Colombia

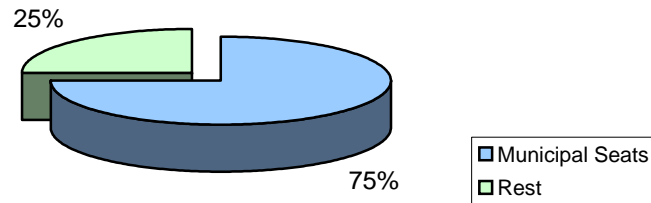
**Total Population: 44.450.260**

Source: DANE, Projections 2008, census 2005

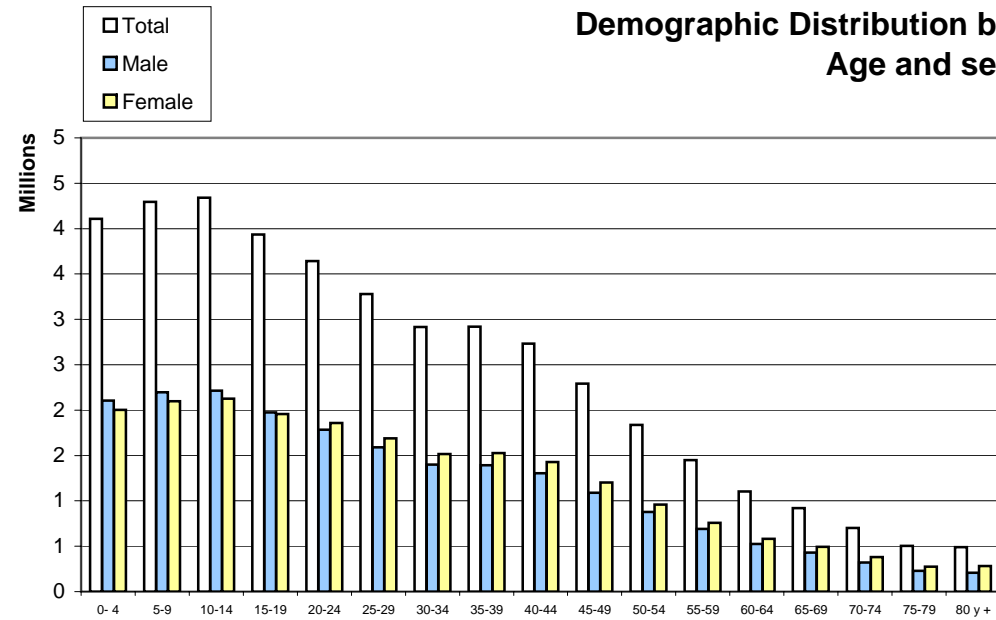
## Demographic Distribution by ethnic groups



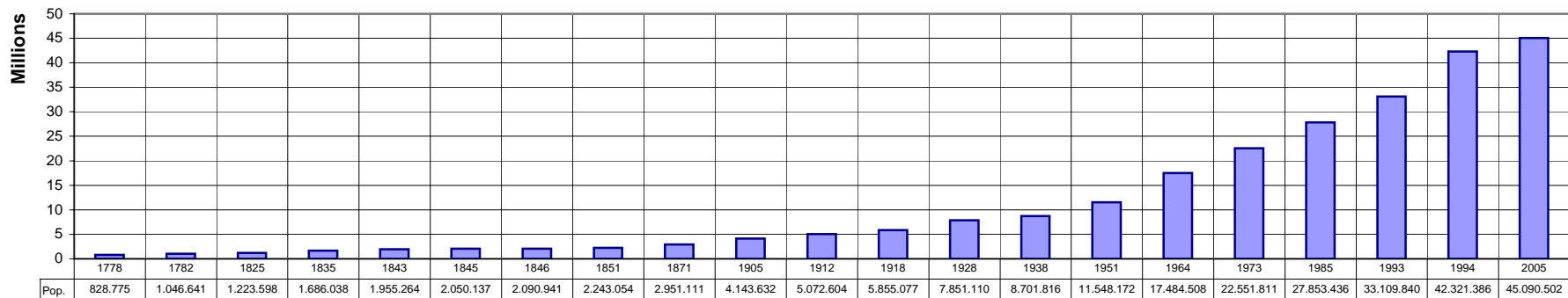
## Demographic Distribution by Area of Residence



## Demographic Distribution by Age and sex



## Population Growth per Census

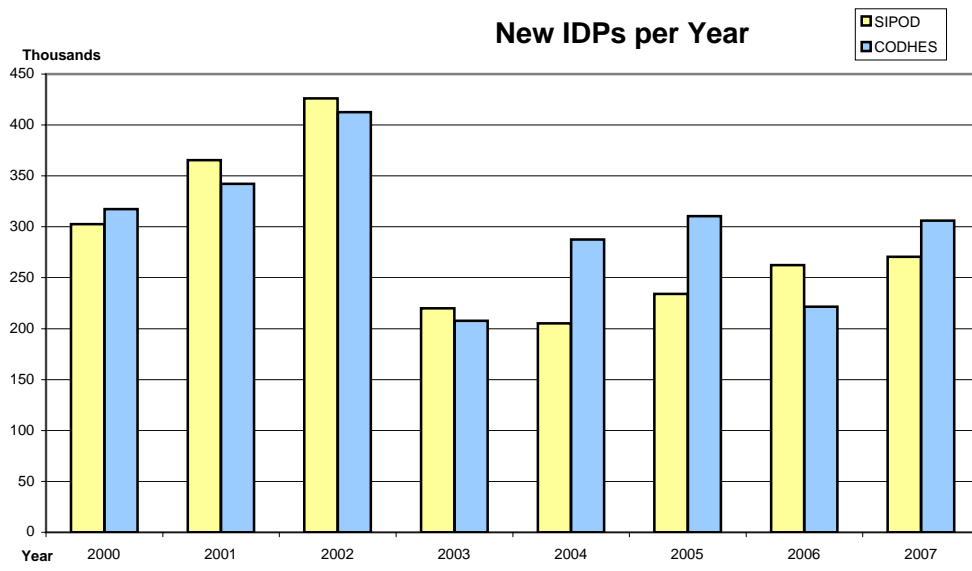


# DISPLACEMENT 1985-2007

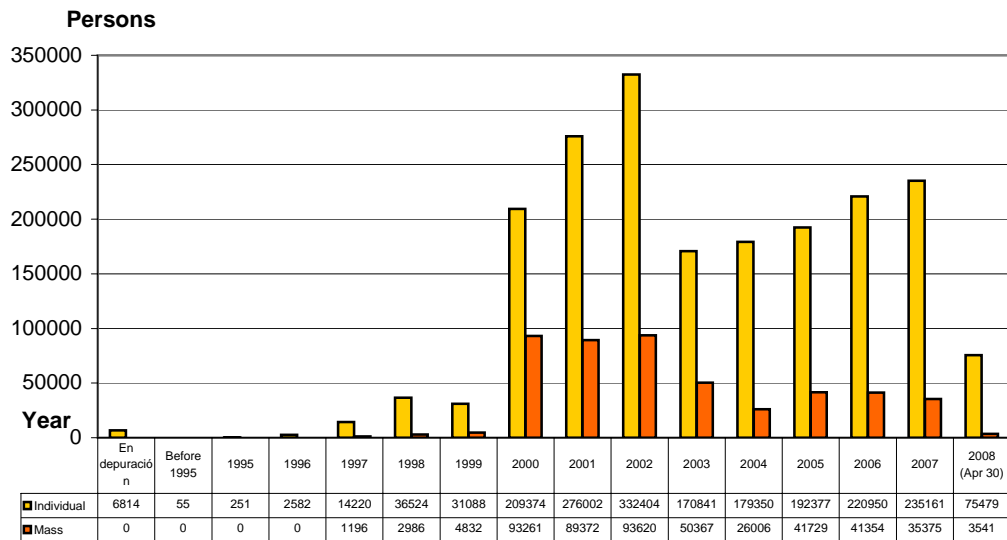
Colombia

Sources: Sipod Cutoff date 31 Dic 2007, CODHES estimates to 31 Dec 2007, DANE population projections 2008

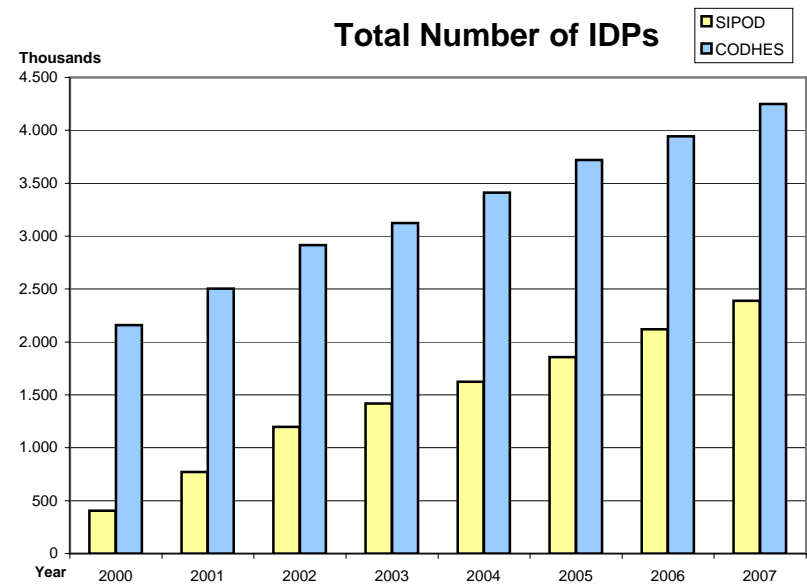
	New Displacements		Accumulated IDP Total by Year		
	SIPOD (NG)	CODHES (NGO)	SIPOD (NG)	CODHES (NGO)	
1987		59.000	1987	122.000	
1988		105.000	1988	227.000	
1989		119.000	1989	346.000	
1990		77.000	1990	423.000	
1991		110.000	1991	533.000	
1992		64.000	1992	597.000	
1993		45.000	1993	642.000	
1994	7.120	78.000	1994	720.000	
1995	251	89.000	1995	7.371	809.000
1996	9.702	181.000	1996	17.073	990.000
1997	15.416	257.000	1997	32.489	1.247.000
1998	39.510	308.000	1998	71.999	1.555.000
1999	35.920	288.127	1999	107.919	1.843.127
2000	302.635	317.375	2000	410.554	2.160.502
2001	365.374	342.243	2001	775.928	2.502.745
2002	426.024	412.553	2002	1.201.952	2.915.298
2003	219.936	207.607	2003	1.421.888	3.122.905
2004	205.356	287.581	2004	1.627.244	3.410.486
2005	234.106	310.387	2005	1.861.350	3.720.873
2006	262.304	221.638	2006	2.123.654	3.942.511
2007	270536	305966	2007	2.394.190	4.248.477
<b>TOTAL**</b>	<b>2.394.190</b>	<b>4.185.477</b>			



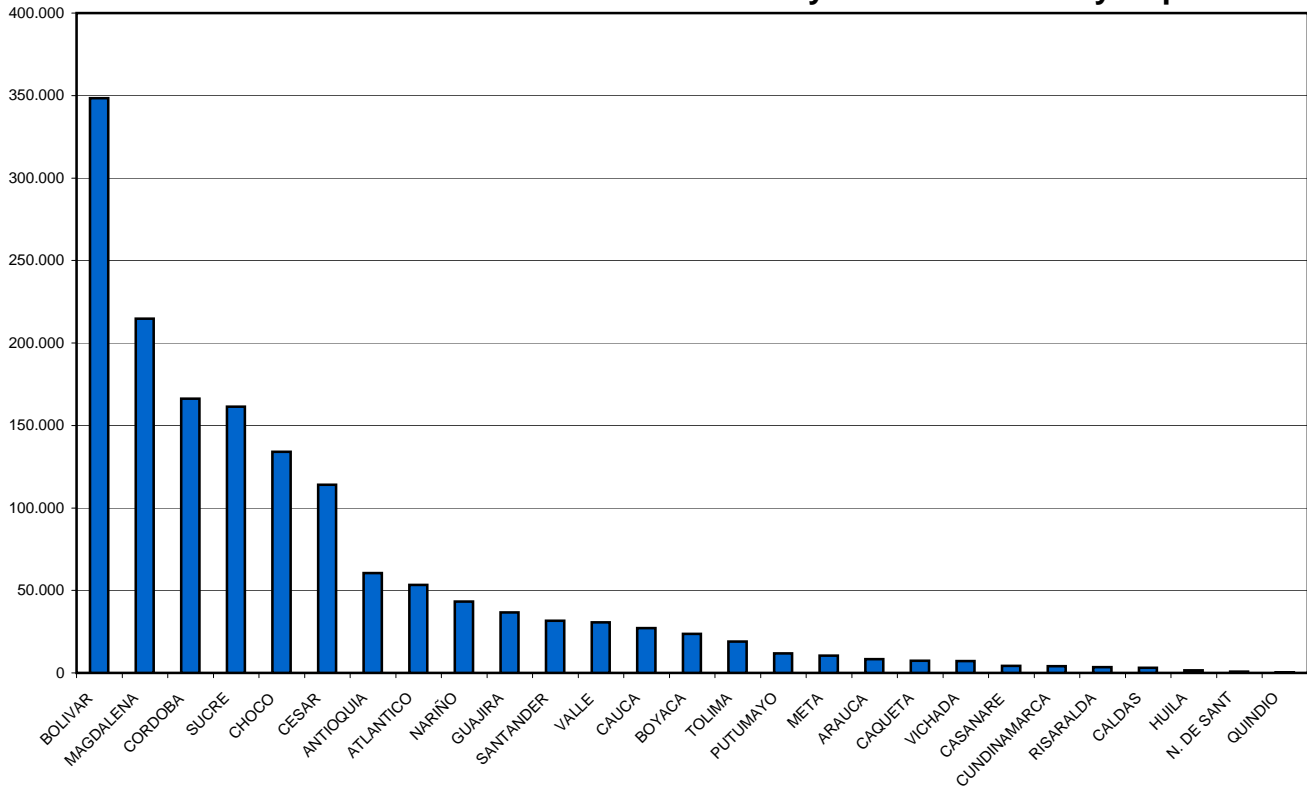
## Register IDPs (SIPOD)



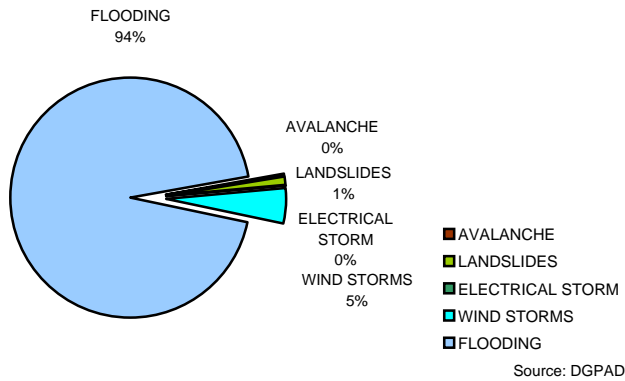
## Total Number of IDPs



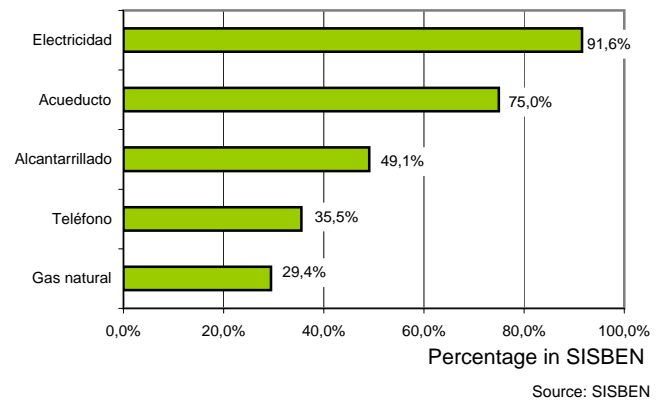
## Affected Persons in Rainy Season in 2007 by Department



## Affected Persons Rainy Season by Event in 2007



## Vulnerability of Homes in SISBEN



## Mines and UXO Victims

