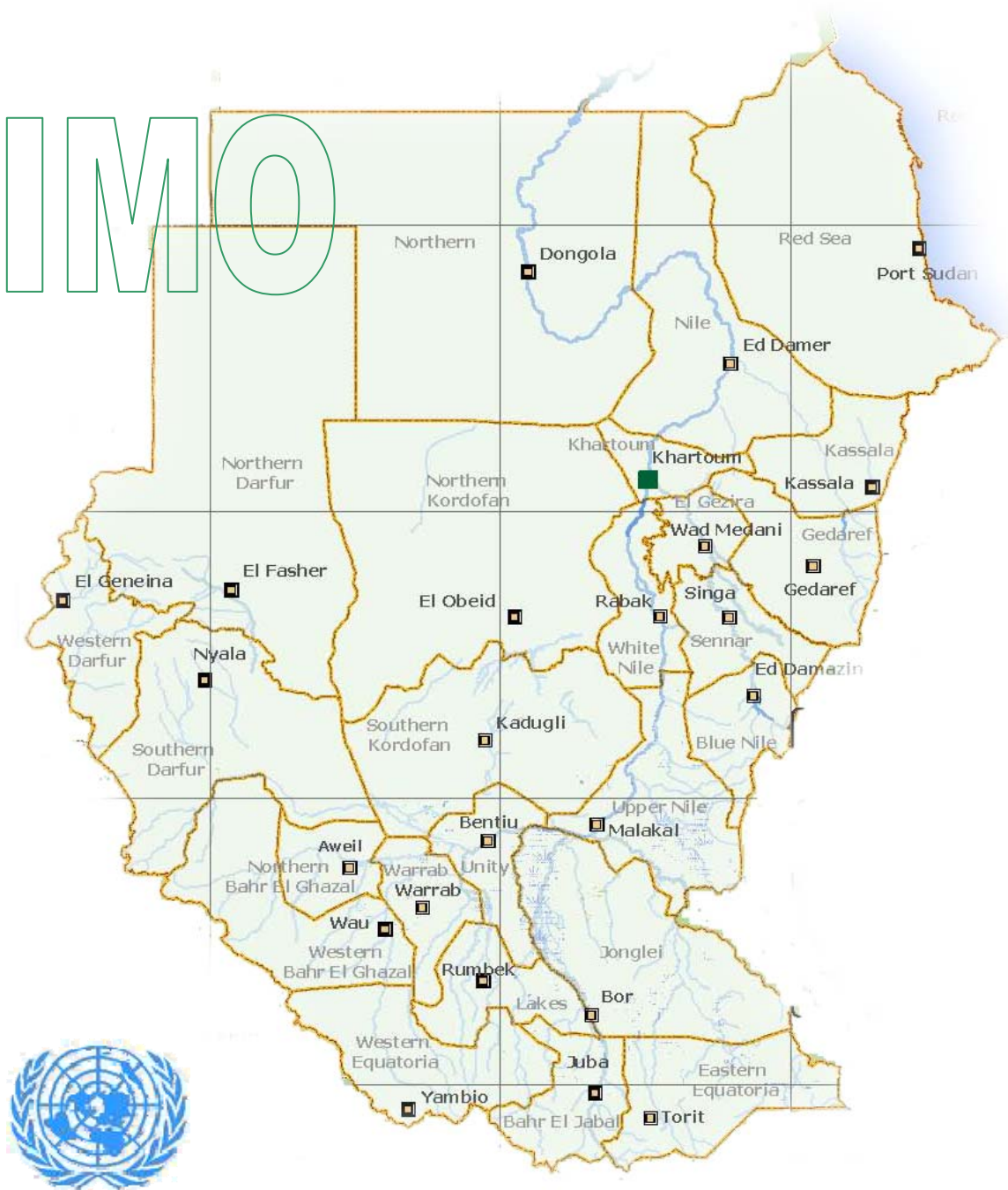


Sudan IDP & Refugee Returns, Reintegration Operations Statistical Overview



UNMIS RRR

Information Management Office
UNMIS, Return Reintegration & Recovery



NOTE ON METHODOLOGY AND RELIABILITY OF DATA

The information used to derive these estimates was contributed by several agencies and NGOs present in different field locations, including OCHA, WFP, UNICEF, UNHCR, IOM and other partners. For the most part, it is information collected for a range of different purposes, depending on agency, location and time.

For 2008 IDPs organized figures are from verified departure notifications, while the refugees are from UNHCR weekly figures including both voluntary organized and assisted self repatriation.

Based on data received through the course of 2004-2008, RRR state teams have tried, as best as possible to verify the data. For this reason, it must be acknowledged that the summary presented herein has a margin of error. Coverage of the different areas was not always complete, and there were gaps in tracking returnee flows. Although all care has been exercised in making the best out of the available information, the figures and maps presented here are based on estimates.

The boundaries and names and designations used in these maps do not imply official endorsement or acceptance by the United Nations

*UNMIS, RRR
January 2009*

Sudan Return and Reintegration Operations

Progress in the peace process between the Government of Sudan and SPLM/A, brought increased hope and security from 2004/2005, encouraging significant return to the southern and three areas of Sudan.

In total there were estimated to be over four-million IDPs and more than 500,000 refugees in neighbouring countries at the time of signing the CPA.

As of the end of December 2008, a total of 81,432 IDPs were assisted home in southern Sudan and the three areas under the joint plan for organized return, agreed upon in October 2006 between *GoNU, GOSS and UN*.

511,597 IDPs have been registered by UN/IOM in three locations as expressing their intention to return home: 1) in greater Khartoum; 2) in Nyala and El Deain, South Darfur; and 3) in Wau, Western Bahr el Ghazal. In addition, some 31,000 have been registered in Blue Nile State by HAC/SRRC, UNHCR and partners.

In the joint organized returns of IDPs, IOM played the lead in the provision of transport for the returnees. To accomplish this, more than 250 separate movements in 2007-2008 were organized, of which the vast majority were by land, but a few involved river or air transport. Around half of those assisted departed from Khartoum.

On the other hand, some other state authorities and other bodies launched organized returns from Khartoum, Northern States, and South Darfur to destinations in southern Sudan and the three areas. Under such movements from 2007 to 2008 an estimated 68,000 returnees went home.

Also other UN IOM movements transported some 698 Mbororo people from Central Equatoria to Unity by air, as well as moving 1,199 IDPs around Kharasana that was a result of various security incidents.

A total of 139,140 refugees were assisted to return home, since the start of repatriation by UNHCR in December 2005, by air and road from five neighbouring countries through 11 different corridors. To date December '08, over 295,000 from a total of 418,000 registered refugees have already returned home voluntarily.

Repatriation operations from the Central African Republic (CAR) and the Democratic Republic of Congo (DRC) have been completed and operations closed; operations in 2008 were mainly from Uganda, Kenya and Ethiopia, and other countries like Egypt, Libya, etc.

The total spontaneous returns of IDPs and refugees to southern Sudan and the three areas since the CPA is estimated around 1.9 million returnees.

The charts and tables in this document provide more details on the returns statistics, analysis and information that could be useful in planning for both return and reintegration.

IDP and Refugee Returns to Southern Sudan and the Three Areas

(January – December 2008)

	IDP	Refugee	Total
Organized Return			
Southern Sudan	27,844	57,369	85,213
South Kordofan, Blue Nile	801	4,816	5,617
	28,645	62,185	90,830
Other Organized '08			39,887
<i>Sub Total</i>			130,717
Estimated Spontaneous	319,860	5,578	325,438
Grand Total			456,155

Cumulative Returns as of December 2008

	IDP	Refugee	Total
Organized Return			
2005		212	212
2006	7,432	25,811	33,243
2007	45,355	50,932	96,287
2008	28,645	62,185	90,830
	81,432	139,140	220,572
Other Organized '07			27,475
Other Organized '08			39,887
<i>Sub Total</i>			287,934
Estimated Spontaneous			1,950,000
Grand Total			2,237,934

NOTE:

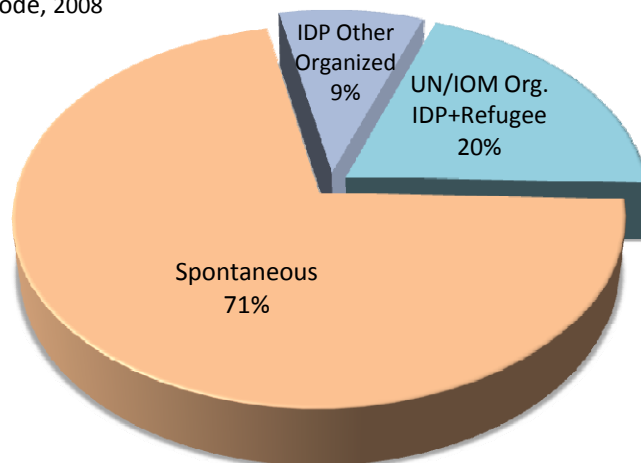
- * Estimates Based on ADRA/IOM Kosti Tracking Figures & RRR Field Offices
- ** Estimated figure including both IDP and Refugee in 2008
Source of Information: RRR field offices IOM, UNHCR, WFP, UNICEF, UNRCO, States RRWG and Partners in the South in coordination with SSRRC
- *** Estimated figure including both IDP and Refugee since 2004

IDP & Refugee Returns

All operations 2008

State	UN/IOM Org.IDP	IDP Other Organized	UN Org. Refugee	UN/IOM Org. IDP+Refugee	Spontaneous	Total Returns
Northern Bahr El Ghazal	7,552	14,471	50	7,602	50,245	72,318
Warrab	5,634	1,527	228	5,862	13,689	21,078
Jonglei	4,300	1,036	5,905	10,205	43,167	54,408
Unity	2,849	5,291	137	2,986	33,775	42,052
Upper Nile	2,404	9,247	5,157	7,561	21,878	38,686
Western Bahr El Ghazal	1,883	1,012	50	1,933	28,784	31,729
Central Equatoria	1,465	0	6,955	8,420	24,513	32,933
Eastern Equatoria	1,072	187	38,203	39,275	22,126	61,588
South Kordofan	801	1,491	4	805	29,260	31,556
Lakes	587	625	85	672	39,812	41,109
Western Equatoria	98	0	35	133	13,189	13,322
Blue Nile	0	0	4,816	4,816		4,816
Abyei *	0	5,000	0	-	5,000	10,000
Khartoum & Others		0	560	560		560
Total	28,645	39,887	62,185	90,830	325,438	456,155

Returns Mode, 2008



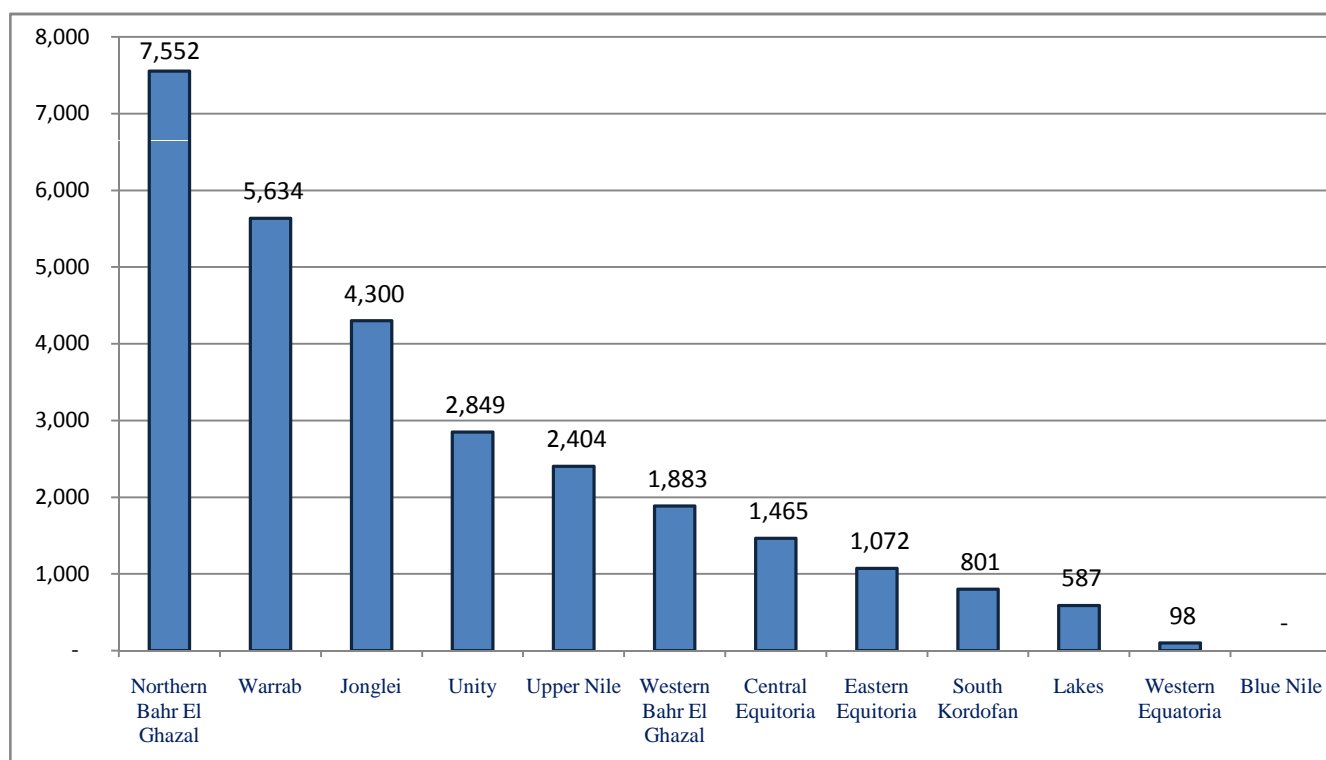
Note: Source of Information: RRR field offices IOM, UNHCR, WFP, UNICEF, UNRCO, States RRWG and Partners in the South in coordination with SSRRC, (best Estimates)

* Due to the May & Dec Incidents, and local situation, figures are best at reporting period

Organized IDP Returns

All operations 2008

Actual Returns State	Cumulative Total		
	HHs	Individuals	%
Northern Bahr El Ghazal	2,112	7,552	26.36%
Warrab	1,071	5,634	19.67%
Jonglei	1,652	4,300	15.01%
Unity	683	2,849	9.95%
Upper Nile	649	2,404	8.39%
Western Bahr El Ghazal	446	1,883	6.57%
Central Equatoria	447	1,465	5.11%
Eastern Equatoria	347	1,072	3.74%
South Kordofan	151	801	2.80%
Lakes	165	587	2.05%
Western Equatoria	20	98	0.34%
Blue Nile	-	-	0.00%
Total	7,743	28,645	100%



IDP Organized Movements (2008)

Total Organized IDP Returns	28,645
Total to Southern States	27,844
Total to three Areas	801

From Khartoum to Southern Sudan

State	HHs	Individuals
Upper Nile	649	2,404
Lakes	165	587
Unity	683	2,849
Warrab	697	3,309
Northern Bahr El Ghazal	-	-
Western Bahr El Ghazal	446	1,883
Central Equatoria	-	-
Eastern Equatoria	94	383
Western Equatoria	-	-
Jonglei	-	-
Total	2,734	11,415

From Khartoum & Other Northern States To Three Areas

State		HHs	Individuals
Departure Point	Receiving		
Khartoum	South Kordofan	151	801
Blue Nile	Blue Nile	-	-
Total		151	801

From Other States To Southern Sudan

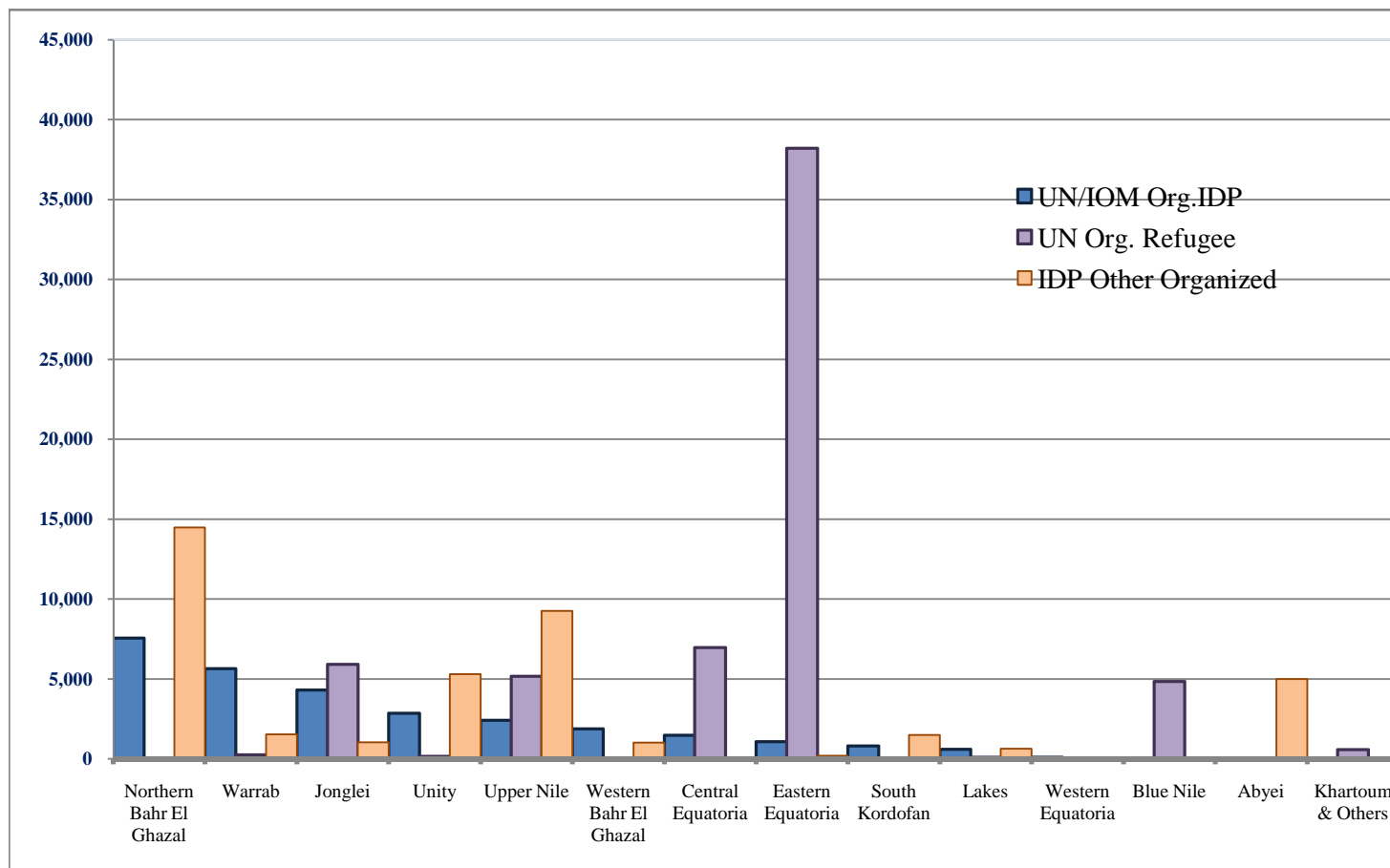
State		HHs	Individuals
Departure Point	Receiving		
South Darfur	Northern Baher el-Ghazal	2,112	7,552
Wau	Warrab	374	2,325
Equatoria/s	Jonglei	1,652	4,300
Equatoria/s	Equatoria/s	603	2,252
Total		4,741	16,429

Organized IDP & Refugee Returns

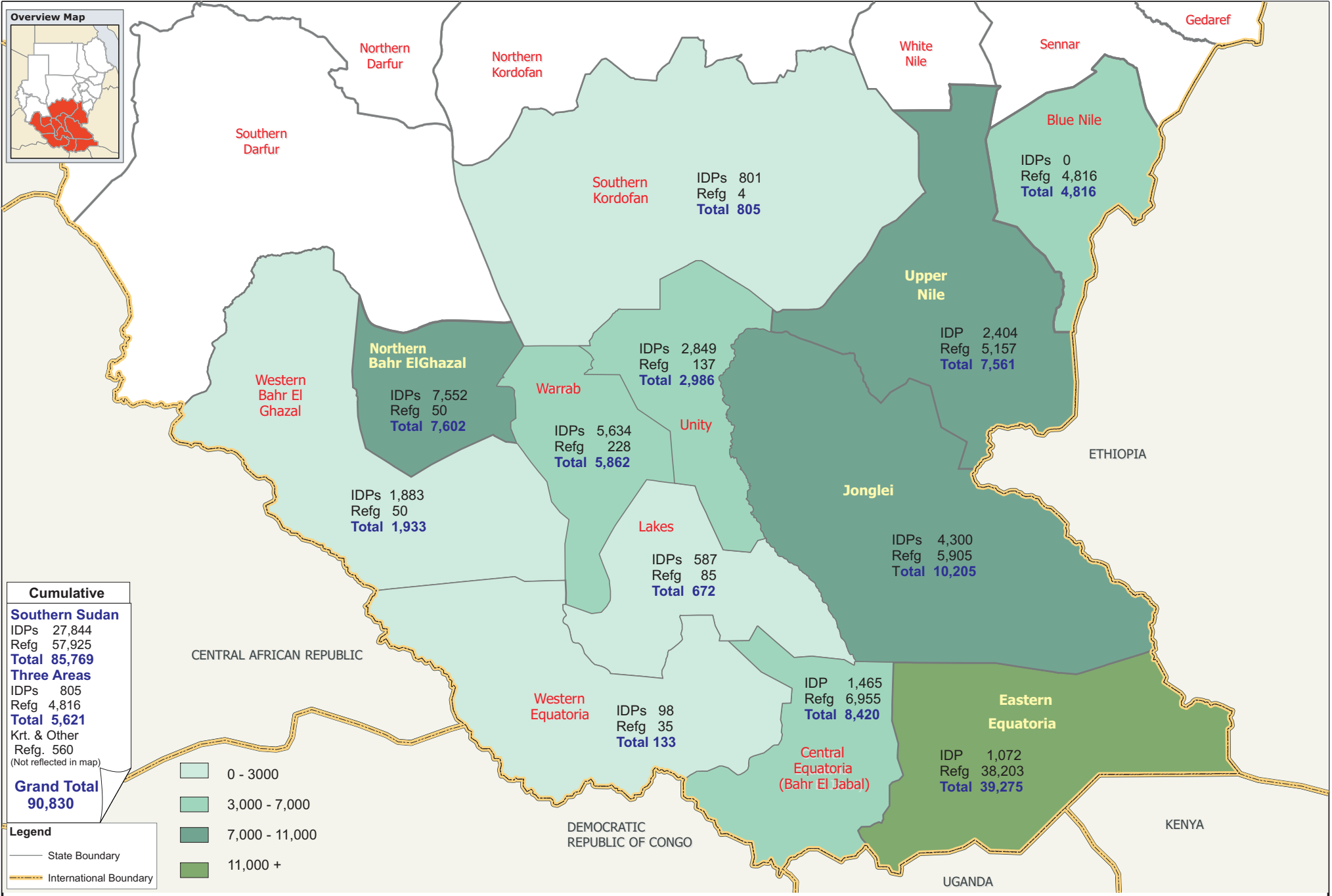
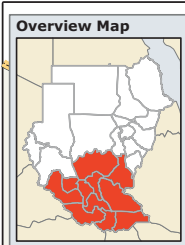
All operations 2008

Actual Returns	UN/IOM Org.IDP	IDP Other Organized	UN Org. Refugee
State	Individuals	Individuals	Individuals
Northern Bahr El Ghazal	7,552	14,471	50
Warrab	5,634	1,527	228
Jonglei	4,300	1,036	5,905
Unity	2,849	5,291	137
Upper Nile	2,404	9,247	5,157
Western Bahr El Ghazal	1,883	1,012	50
Central Equatoria	1,465	0	6,955
Eastern Equatoria	1,072	187	38,203
South Kordofan	801	1,491	4
Lakes	587	625	85
Western Equatoria	98	0	35
Blue Nile	0	0	4,816
Abyei	0	5,000	0
Khartoum & Others		0	560
Total	28,645	39,887	62,185

UN/IOM Org. IDP+Refugee
7,602
5,862
10,205
2,986
7,561
1,933
8,420
39,275
805
672
133
4,816
-
560
90,830



UN Organized IDP and Refugee Returns (by State) 2008



Cumulative	
Southern Sudan	
IDPs	27,844
Refg	57,925
Total	85,769
Three Areas	
IDPs	805
Refg	4,816
Total	5,621
Krt. & Other	Refg. 560
<small>(Not reflected in map)</small>	
Grand Total	90,830

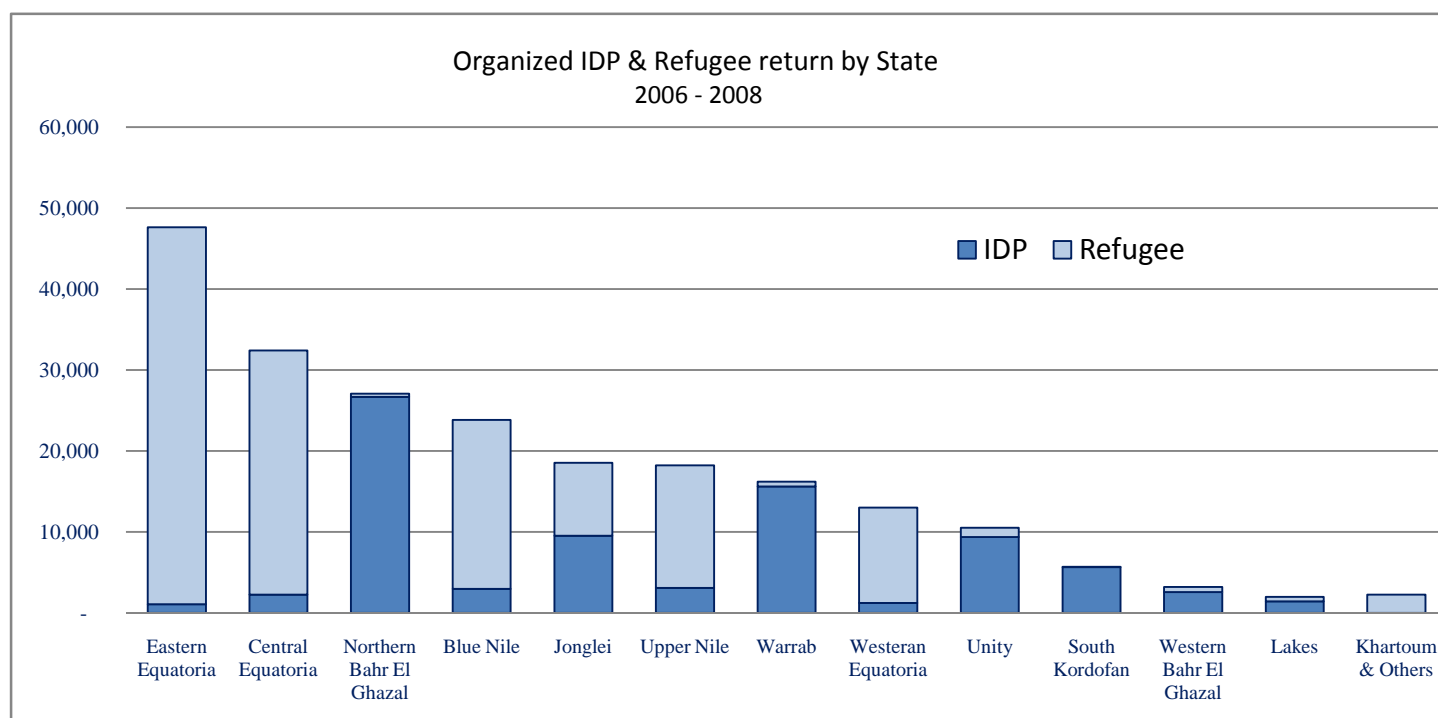
Legend	
	State Boundary
	International Boundary

	0 - 3,000
	3,000 - 7,000
	7,000 - 11,000
	11,000 +

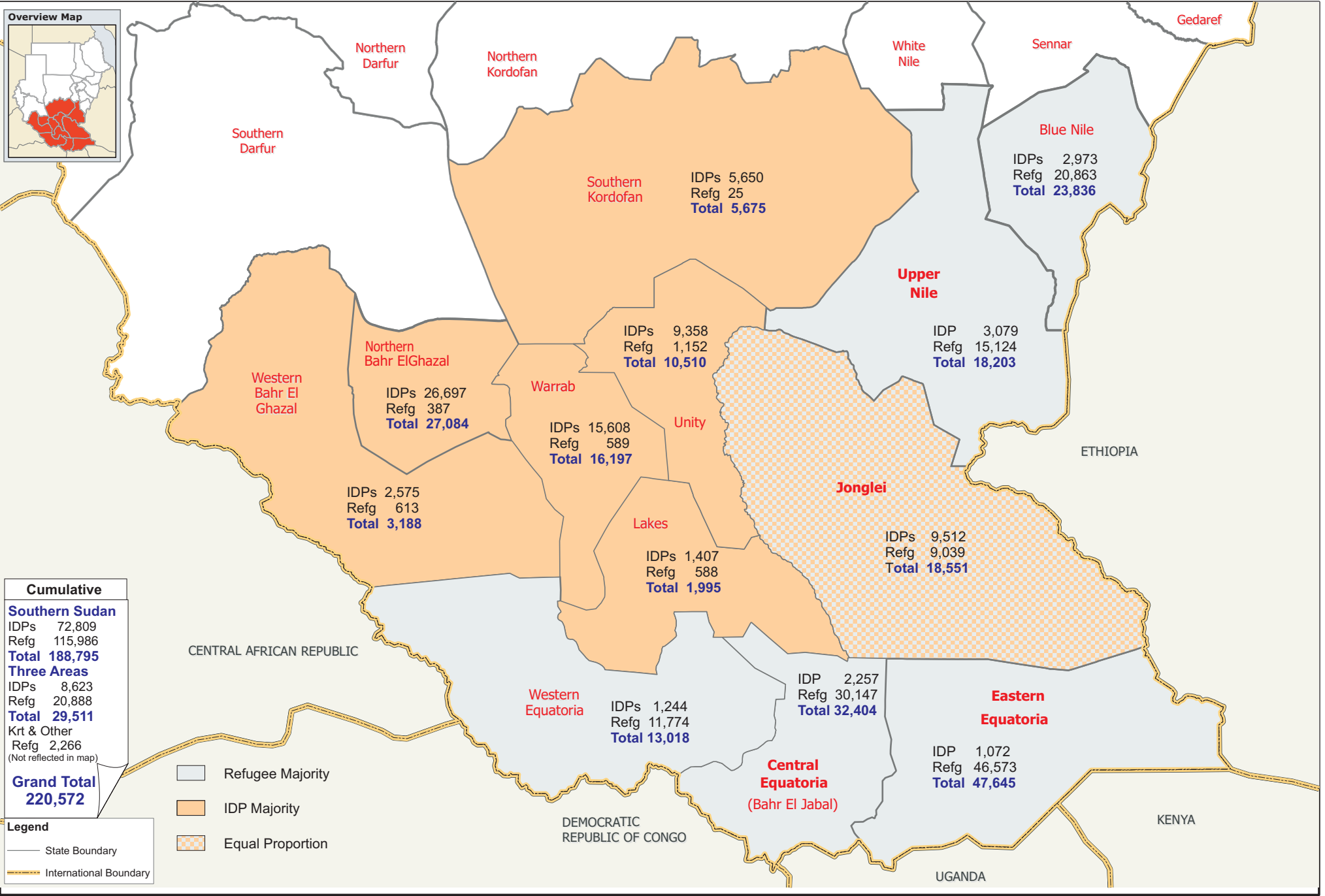
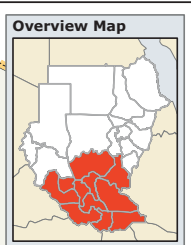
UN/IOM Organized IDP and Refugee Returns

All operations 2006/2007/2008

Actual Returns State	IDP			Refugee			IDP/Refugee TOTAL
	2006-2007	2008	2006-2008	2006-2007	2008	2006-2008	
Eastern Equatoria	-	1,072	1,072	8,370	38,203	46,573	47,645
Central Equatoria	792	1,465	2,257	23,192	6,955	30,147	32,404
Northern Bahr El Ghazal	19,145	7,552	26,697	337	50	387	27,084
Blue Nile	2,973	0	2,973	16,047	4,816	20,863	23,836
Jonglei	5,212	4,300	9,512	3,134	5,905	9,039	18,551
Upper Nile	675	2,404	3,079	9,967	5,157	15,124	18,203
Warrab	9,974	5,634	15,608	361	228	589	16,197
Westeran Equatoria	1,146	98	1,244	11,739	35	11,774	13,018
Unity	6,509	2,849	9,358	1,015	137	1,152	10,510
South Kordofan	4,849	801	5,650	21	4	25	5,675
Western Bahr El Ghazal	692	1,883	2,575	563	50	613	3,188
Lakes	820	587	1,407	503	85	588	1,995
Khartoum & Others			-	1,706	560	2,266	2,266
Total	52,787	28,645	81,432	76,955	62,185	139,140	220,572



UN Organized IDP and Refugee Returns (by State) 2006-2008



Cumulative	
Southern Sudan	
IDPs	72,809
Refg	115,986
Total	188,795
Three Areas	
IDPs	8,623
Refg	20,888
Total	29,511
Krt & Other	
Refg	2,266
<small>(Not reflected in map)</small>	
Grand Total	220,572

Legend	
	Refugee Majority
	IDP Majority
	Equal Proportion
	State Boundary
	International Boundary

IDP & Refugee Returns

All operations (2004-2008)

Actual Returns		
Organized By	Individuals	%
UN/IOM/UNHCR	220,572	9.86%
States/Other Organized	67,362	3.01%
Spontaneous	1,950,000	87.1%
Total	2,237,934	100%

* Estimated Figure, Sources OCHA, UNICEF, UNHCR, WFP, RRR, IOM, SSRRC, and other partners

